

Cottam Solar Project

Consultation Report

Appendix C5.7: Phase Two Community Consultation Materials

Parts 1 of 3

Prepared by: Counter Context
January 2023

PINS reference: EN010133
Document reference: APP/C5.7
APFP Regulation 5(2)(q)



Contents

Phase Two Community Consultation Leaflet **3**

Phase Two Feedback Form **23**

Phase Two Community Consultation Leaflet

Cottam Solar Project and West Burton Solar Project

Phase Two Community Consultation Leaflet
June 2022



Introduction

Welcome to our phase two consultation on our proposals for the Cottam Solar Project and West Burton Solar Project. We want to hear your views on our detailed design proposals for the solar projects, including how to minimise the impact of the projects and our preliminary environmental information.

Our consultation starts on Wednesday 15 June 2022. It will run for six weeks, closing on Wednesday 27 July 2022. We welcome your comments.

This consultation leaflet presents our updated proposals following our phase one consultation last year. We would like to thank everyone that has responded to us so far.

Last year we held our phase one consultation where we introduced the projects to the local community and asked for feedback on our early-stage proposals. Since the end of our phase one consultation, we have considered the feedback you gave us and have been using it to develop our proposals further. This includes undertaking our environmental assessments, developing our site layouts – including plans for additional tree planting and other environmental mitigation measures – and working with local community groups to explore opportunities for delivering direct local benefits.

For our phase two consultation, we have published a Preliminary Environmental Information Report (PEIR) for each project. These have been informed by the environmental assessments and surveys we have been undertaking. The PEIR is designed to help you understand the likely environmental effects of the project and mitigation measures proposed and to help inform your consultation response.

Both the Cottam Solar Project and West Burton Solar Project are classified as Nationally Significant Infrastructure Projects, because of the amount of renewable energy they will generate. This means we have to submit two separate Development Consent Order (DCOs) planning applications, one for each project. Although we will be submitting two DCOs applications, we recognise how close the projects are together and are developing the proposals in parallel. This consultation is for both projects to provide a joint opportunity to give feedback on either one or both projects; so you don't have to submit feedback twice.

Copies of this leaflet, our feedback form, and the PEIR for each project are all available on our project websites: [redacted] and [redacted], and at the Community Access Points listed at the back of this leaflet.

Please don't hesitate to get in contact with us if you have any questions about our phase two consultation, including to request copies of the consultation materials. You can reach us by using the contact details on the back page of this leaflet, including by email, phone or post.



An example of an island Green Power solar project in Cornwall

About the projects

Cottam Solar Project Limited and West Burton Solar Project Limited are developing proposals for two new solar and energy storage projects that would cross the county border between Lincolnshire and Nottinghamshire.

These proposals involve the generation of renewable power using solar photovoltaic (PV) panels. This clean energy would then be connected to the National Grid, and power up to **324,000** UK homes. The project will also store energy on site for when it is needed most by local homes and businesses.

From October 2024, Great Britain will no longer use coal to generate electricity. As part of this, the coal powered Cottam Power Station stopped generating in 2019, and West Burton is set to be decommissioned shortly. At the same time, we know demand for electricity is continuing to increase and that the UK faces some of the highest electricity costs in Europe. There is a clear need for renewable, affordable and reliable energy to be generated here in the UK.

The decommissioning of Cottam and West Burton Power Stations presents the opportunity to repower the region with clean, green energy.

About us

Island Green Power are an international developer of renewable energy projects.

Cottam Solar Project Limited and West Burton Solar Project Limited are part of Island Green Power Limited. Established in 2013, Island Green Power (IGP) have delivered 26 solar projects worldwide totalling more than 1GW of capacity. This includes 14 solar projects in the UK and Republic of Ireland. IGP's mission is to increase solar energy usage, making more renewable energy possible and saving thousands of tonnes of CO2 in the process.



Improve energy resilience by diversifying energy production and **storing energy** for when it is needed most



Generate enough clean energy to power up to **324,000** homes



Replace around **30%** of the generation capacity of the coal powered Cottam Power Station and replace around **24%** of the capacity of West Burton with **clean, green, renewable energy**



Support regional and national targets for reducing carbon emissions to net zero by **2050**



Contribute towards strategic improvements to local **ecology and biodiversity**



Deliver **affordable energy**, as the electricity generated from solar is already cheaper than electricity generated from fossil fuels and the project would be subsidy free without taxpayer funding

Our phase two consultation

Our phase two consultation will run from Wednesday the 15th June until Wednesday 27th July.

You can access our consultation materials and provide your views at any point during this time.

Our phase two consultation will be our statutory consultation.

Updated information on the design and layout of the sites is now available to help inform you of our phase two consultation. This includes information on the results of our environmental surveys that we have been undertaking as part of the Environmental Impact Assessment (EIA) process. As part of this, we have produced a document called the Preliminary Environmental Information Report (PEIR) for each project. We are consulting on this information as part of our phase two consultation, including our proposals for minimizing environmental impact and delivering environmental enhancement.

We welcome your comments on:

- Further refining the detailed design proposals for the projects, such as the final cable routes and site layouts
- The proposed mitigation measures to minimise impacts on local communities and the environment (and whether you think they go far enough)
- The environmental enhancement measures and community benefit opportunities proposed

You can find out how the feedback from our phase one consultation has already helped to shape the proposals, by viewing our phase one consultation summary report on our project websites, at either:

We are also making available a non-technical summary of the PEIR. This will be available at our Community Access Points and can be posted out on request.



Phase one public information event

Have your say

Learn more about our latest proposals and provide your feedback to our phase two consultation in the following ways:

- Join us at our information events to meet the project team, learn about our proposals, and provide your feedback
- Visit our dedicated project websites to view the latest project information, including our full suite of phase two consultation documents, and provide your feedback
- Visit one of our Community Access Points to view hard copies of consultation materials available during the consultation period
- Contact our communication lines via phone, post or email
- Complete and post a feedback form back to us via:

FREEPOST: CAWB Solar Projects

Feedback forms have been posted together with this consultation leaflet to all homes and businesses within our core consultation zone. Feedback forms will also be provided on request via post.

To provide feedback online through our digital engagement platform please visit either [redacted] or [redacted]

Details of our project communication lines, information events and Community Access Point locations are available at the back of this leaflet.

Site layouts

Since our phase one consultation we have used the feedback we received at phase one to inform our detailed design layouts for the sites.

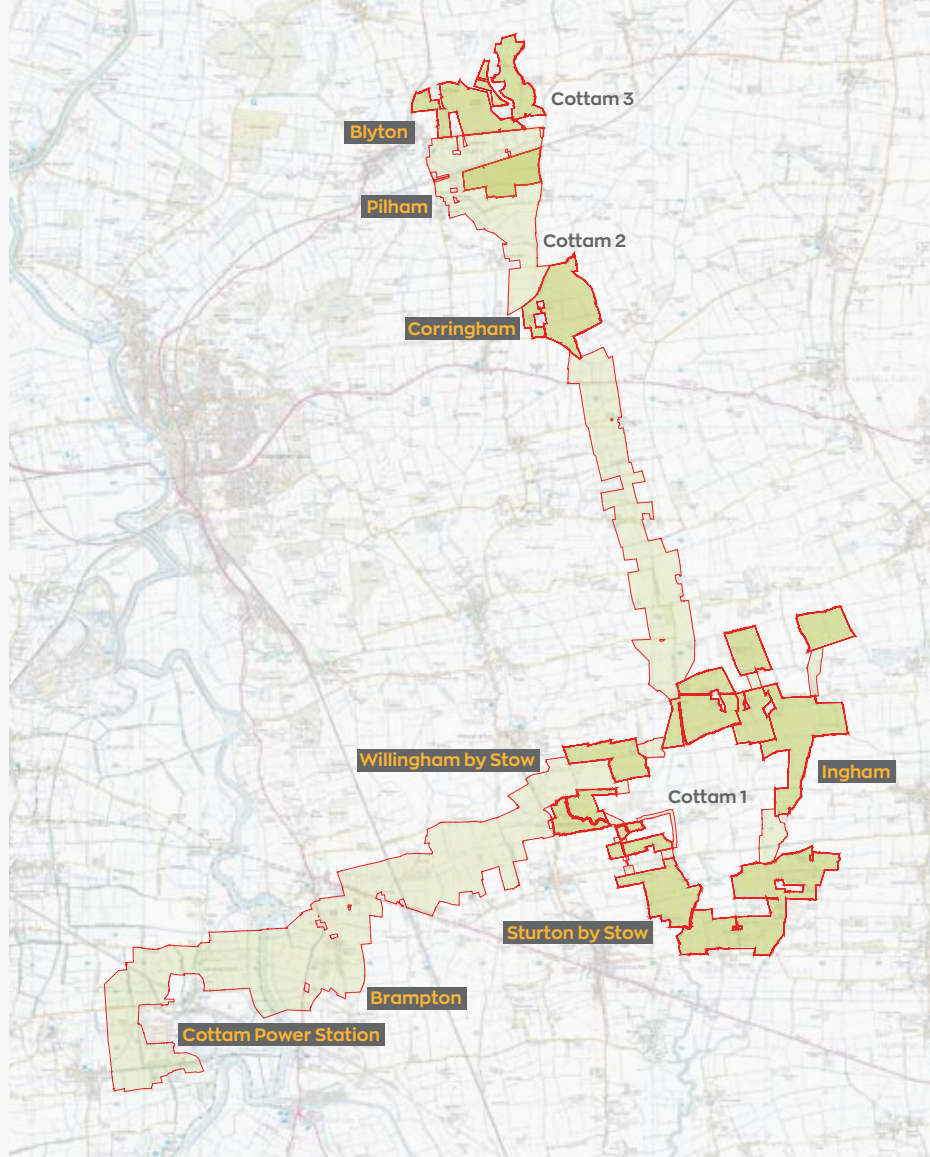
Below are the detailed site designs for both Cottam and West Burton Solar Projects. We have been working to design our sites as sensitively as possible to the surrounding environment. The potential environmental impact of the sites during and post construction have been assessed as part of the PEIR. When designing our sites we have:

- Removed some areas of better quality agricultural land from the development area;
- Introduced a buffer between some residential properties and the panels and propose that certain fields have no panels at all due to landscape and visual considerations;
- Designed the West Burton 2 site so that there are no panels in the eastern part after detailed assessment concluded that flooding would be too deep for panels to be viable;
- Taken into account potential archaeology on the site;
- Proposed access points that use existing field entrances and avoid large impacts on the local road network;
- Ensured offsets from sensitive ecology such as badger setts, watercourses, ditches and trees with bat roost potential.

For full-scale site layout maps, you can visit the project websites, or they can be viewed at our public information events the details of which are on page 32.



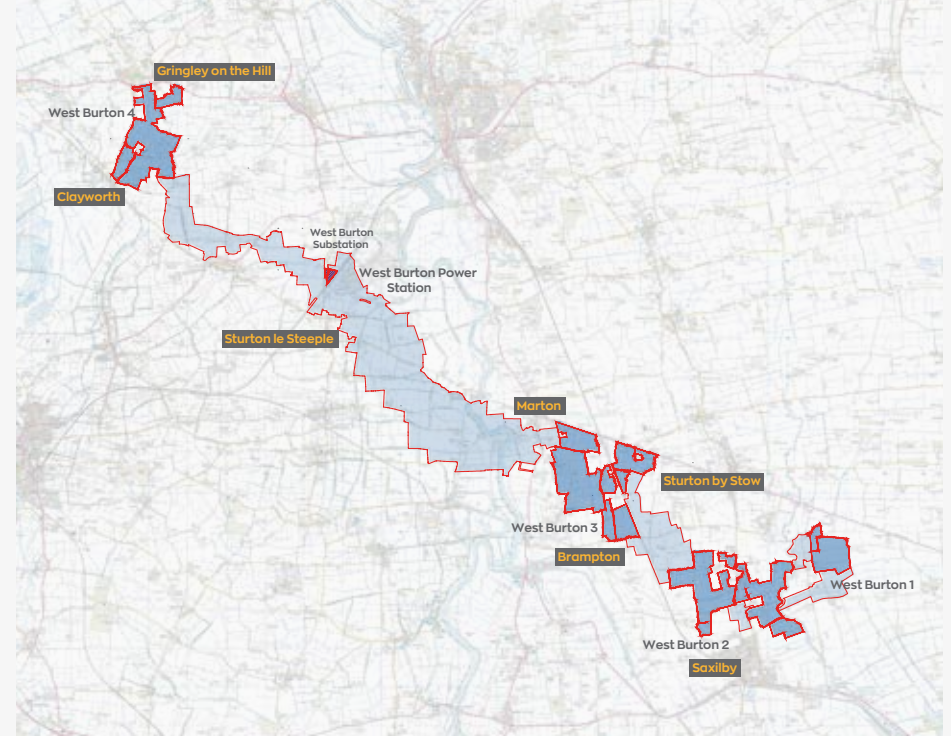
Cottam Solar Project



Key

- Area for solar panels and associated development
- Cable Route Search Corridor

West Burton Solar Project



Key

- Area for solar panels and associated development
- Cable Route Search Corridor
- Area for energy storage and associated development

Cottam 1



Cottam (W,a)

Cottam (N)



Cottam (W,b)

Cottam (S)

Key

- Project Boundaries
- Electrical Substation
- Solar Panels
- Conversion Units
- Maintenance Tracks
- Energy Storage Area

Cottam 2

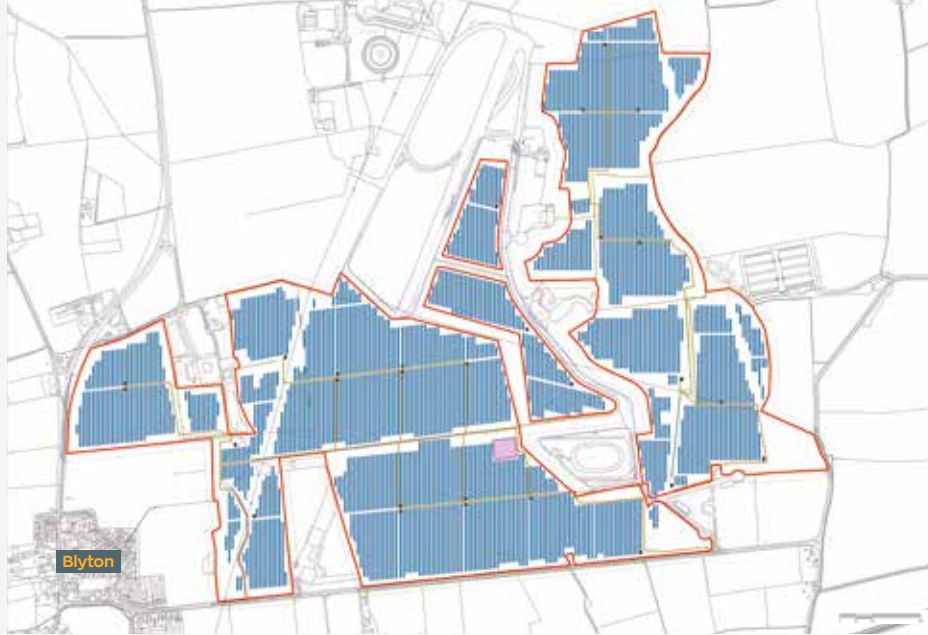


Corringham

Key

- Project Boundaries
- Electrical Substation
- Solar Panels
- Development Area
- Maintenance Tracks
- Conversion Units

Cottam 3

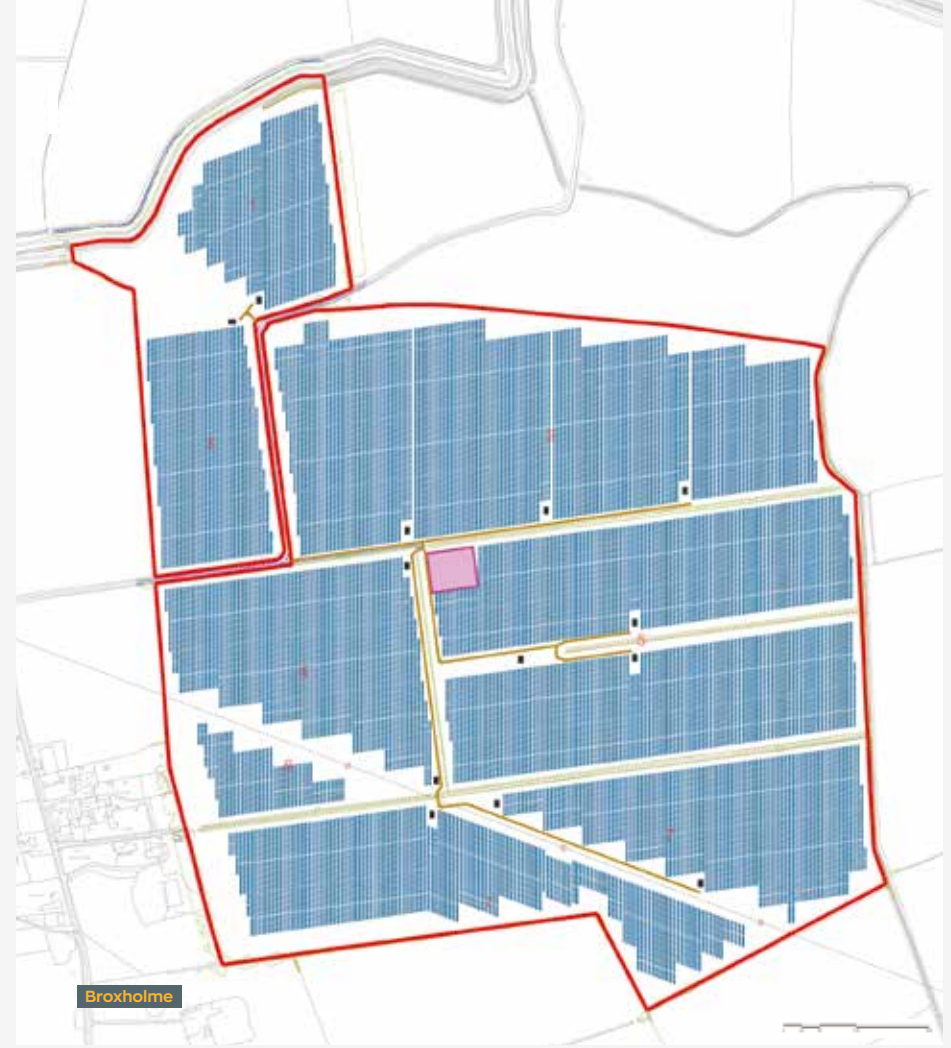


Cottam 3b

Key

- Project Boundaries
- ▨ Electrical Substation
- ▨ Solar Panels
- ▭ Conversion Units
- Maintenance Tracks

West Burton 1



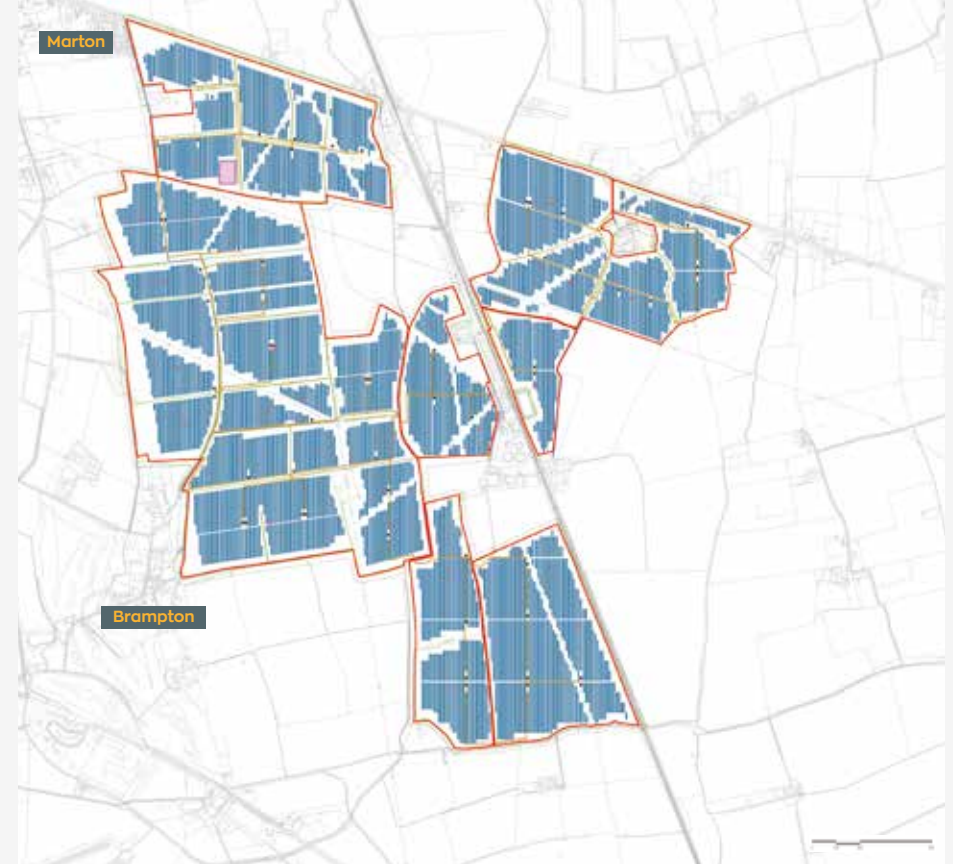
Key

- Project Boundaries
- ▨ Electrical Substation
- ▨ Solar Panels
- Maintenance Tracks

West Burton 2 Site Layout



West Burton 3 Site Layout



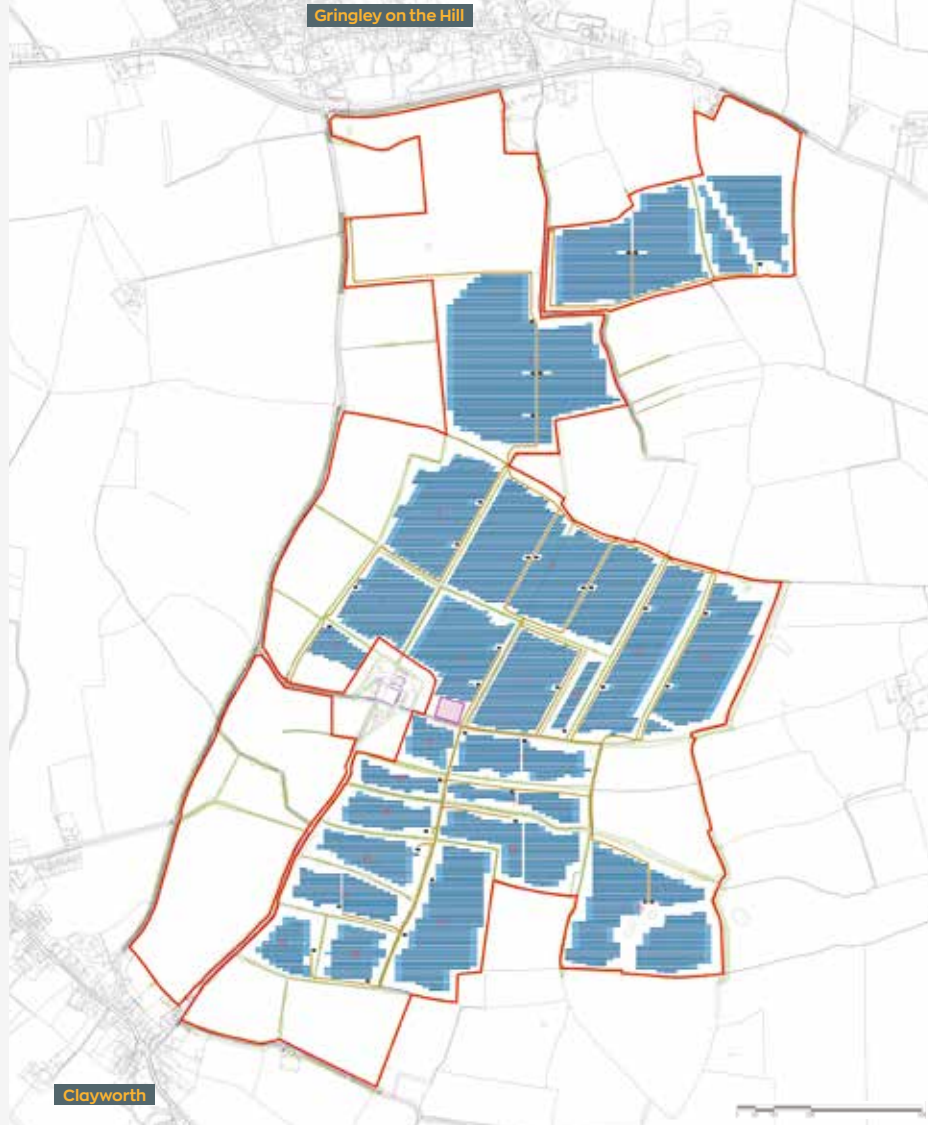
Key

- Project Boundaries
- ▨ Electrical Substation
- ▨ Solar Panels
- Conversion Units
- Maintenance Tracks

Key

- Project Boundaries
- ▨ Electrical Substation
- ▨ Solar Panels
- Conversion Units
- Maintenance Tracks

West Burton 4 Site Layout



Key

- Project Boundaries
- ▨ Electrical Substation
- ▨ Solar Panels
- Maintenance Tracks
- ▭ Conversion Units

As part of the solar project proposals, we have also been developing our plans for the West Burton Substation site.

The substation site is situated next to West Burton Power Station and will be used for grid connection infrastructure and energy storage.

West Burton Substation



Key

- Option Area
- ▨ Electrical Substation
- ▨ Energy Storage Area

Since the close of our phase one consultation, we have also been working to refine our cable route corridors. We now have more revised cable route search areas to present to you in this phase.

The refined cable routes for both Cottam and West Burton Solar Projects are shown on the following pages. We have been working to design our cable routes as sensitively to the surrounding environment as possible. The potential environmental impact of the cable routes including during and post construction have been assessed as part of the PEIR. When refining the routes to minimise impacts on the local community and environment, we have combined the cable routes as far as possible, including in collaboration with the separate Gate Burton Energy Park project being proposed by Low Carbon. We have also avoided residential and business properties and environmental constraints including designated heritage and ecology features.

The main area of refinement of the cable route has taken place around the crossing of the River Trent, with a preferred location chosen to the southwest of Marton. Collaborating with Low Carbon, we are seeking to establish a combined cable route in this area where all three projects need to cross the River Trent. This approach will have the benefit of reducing the environmental impact of all three projects with regard to land use, ecology, heritage, and reduced construction works. The preferred river crossing route has been determined based on avoidance of ecological constraints and notable historic environment features, such as the Roman Town at Littleborough, and the Viking Camp at Torksey.

The more focussed search areas have been led primarily by landowner consultation. Alongside this, a desk-based parameters approach has identified land with previous or ongoing planning permissions or ongoing planning applications, so that these can be avoided.



An example of an Island Green Power solar project

Our environmental information and mitigation measures

We are undertaking a full Environmental Impact Assessment (EIA) as part of the proposals to inform our design. The EIA is a detailed process through which the likely environmental effects of the proposed development are studied, surveys carried out and mitigation measures proposed to reduce or remove any environmental impacts that are identified. Importantly, the EIA process also responds to the issues raised through feedback from the local community during the consultation and helps to provide detailed answers which address those concerns. Our EIA Scoping Reports for each project were submitted to the Planning Inspectorate (PINS) in February 2022 and PINS has published its Scoping Opinion for both Cottam and West Burton.

Preliminary Environmental Information Report

As part of our phase two consultation, we are now presenting the findings of the environmental studies undertaken to date in our Preliminary Environmental Information Report (PEIR). We are asking for your feedback on this environmental information and the planned environmental mitigation measures to help shape our final design for the projects. Following this phase of consultation, we will review all feedback received to inform our final site design and EIA. You can find out more about our current environmental information and proposed mitigation measures in the next pages of this leaflet.

How to access our environmental information

The PEIR and all other consultation materials including a non-technical summary of the PEIR are available on both of our project websites. You can also view these documents at our Community Access Points that are listed further along in this leaflet, or by attending one of our information events. The PINS Scoping Opinions for each project are still available on the project pages of the national infrastructure planning website:

<https://infrastructure.planninginspectorate.gov.uk/projects/east-midlands/>.

Environmental mitigation measures

Our environmental mitigation measures include:

- Existing vegetation along the boundary of the sites will be retained and managed where practicable to ensure its continued presence and to aid the screening of low-level views into the sites.
- Production of a landscape and ecological management plan, to set out a strategy to manage the habitats created over the lifetime of the project
- Access for construction and operation will utilise existing field entrances and gaps in hedgerows and other linear habitats wherever possible
- Best practice measures will be implemented during construction to minimise noise and vibration
- Avoidance of areas of surface water flooding greater than 1m depth

Landscaping

As part of the ongoing EIA process, we have been assessing the potential visual impact of the sites on the local area. Since our phase one consultation we have been assessing viewpoints surrounding the sites, including meeting with neighbouring residents to better understand what the sites will look like to those living in the community and to find ways to reduce the visual impact on the local area as much as possible. The concerns of the local community have been carefully considered and we have developed the site designs to take these into account. For example, we have designed the sites in a way so as to limit impacts on public rights of way. As part of the Landscape and Visual Impact Assessment (LVIA) we have taken a number of photographs from local viewpoints from which we have developed 360° panoramas which you can view in our PEIR for each project.

Agriculture

The proposals mean that there would be a change from the current agricultural land use for the duration of the lifetime of the projects. We appreciate that this will mean altering the role the sites play, and the character of this compared to now for those living near the projects during that time. However, the land will continue to produce a valuable resource for the UK in the form of renewable energy, helping to reduce carbon emissions for future generations.

We are also exploring the potential for the land to continue to be used for animal grazing underneath the panels, and for new habitats for wildlife to be created in and around the site areas, allowing the land in time to return to more traditional farming. When selecting the sites, we sought to avoid using the best and most versatile agricultural land. The Department for Environment, Food and Rural Affairs (DEFRA) classifies the majority of the land chosen as being Grade 3 land, but we have been conducting more detailed soil surveys as part of the EIA process. As part of our EIA assessments, we have been using this data to consider the potential impact on local agriculture, and this is being used to inform the design and mitigation proposals alongside other environmental considerations.

The West Burton Solar Project sites have been assessed as being more than 75% lower quality agricultural land and Cottam Solar Project's sites are more than 90%. These figures demonstrate the grading across the entirety of the site areas, and updated figures will be presented in the final planning submission for the site areas used for PV panels and associated infrastructure, once the final layouts of the projects have been determined.

Local ecology and biodiversity

We have been undertaking ecology surveys to establish the species and habitats present on the sites. Among others, the following have been found: badgers, otter, water voles, breeding and overwintering birds, and a number of species of bats. The PEIR documentation details how impacts upon these species and habitats will be mitigated, both at the construction and operation stage. It is anticipated that the solar projects can deliver a significant biodiversity net gain. This is due to the large-scale reversion of arable to permanent grassland, as well as the adoption of generous ecological buffer zones (including of watercourses and marginal habitat) which will be sympathetically managed to maximise biodiversity value. Furthermore, significant planting of new hedgerows and tree lines will contribute to enhancing linear habitats.

Traffic management and construction

As part of the PEIR we have assessed the potential impacts of traffic during construction and produced outline traffic management measures which set out the standards and procedures for managing the impact of traffic during the construction period. This includes localised road improvements where necessary to minimise any traffic disruption for the local community, and procedures to manage and control traffic levels.

Some of the proposals we have made to manage construction traffic are:

- Temporary road signing will be implemented along the designated route to inform other traffic of the ongoing construction works and to direct construction traffic to and from the sites;
- Where possible, construction deliveries will be coordinated to avoid construction vehicle movements during peak hours; and,
- Vehicles carrying material off-site will be sheeted to prevent the spread of dust.

Community benefits

At phase one you gave us your suggestions of the types of community benefits you would like to see as part of the projects. We would like to again thank you for these suggestions. We have taken them on board as we have been developing the proposals further. We have been working with local groups and organisations to explore these proposals out in more detail.

We have been exploring suggestions received from local community organisations to extend the local foot and cycle path networks, including permissive paths that connect the sites to the wider area, providing improved recreational access for local communities.

Two proposals for this are shown on pages 28-31.

We have also been working with the Nottinghamshire and Lincolnshire Community Funds, following your phase one feedback, to explore the creation of a community fund to award funding to the sorts of local community projects and groups you've told us matter most.

Community Access Points

To make our consultation as accessible as possible, we have designated Community Access Points. These are locations within your communities where you are able to access our phase two consultation materials. At these sites you will be able to access:

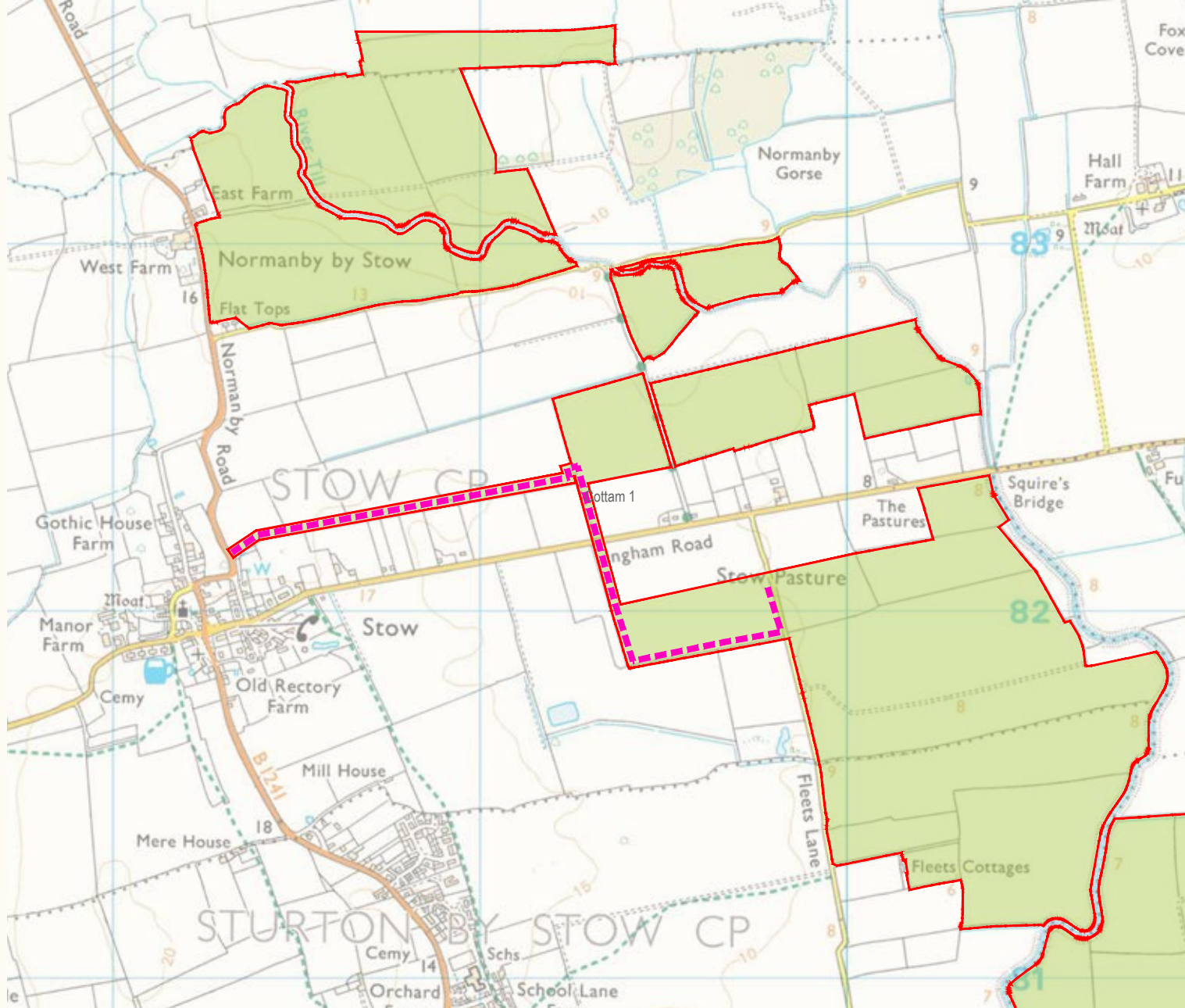
- Additional copies of this leaflet
- Our phase two feedback form
- Copies of the full PEIR for each project available to view
- Copies of non-technical summaries of the PEIRs to take away

You can also access all of our information materials on our project websites. If you would like documents in large print, audio or braille formats, please contact us.

Our Community Access Points are at the following locations;

 <p>Retford Library 17 Churchgate, Retford, DN22 6PE Monday - Friday 9 - 6pm Saturday 9 - 3:30pm</p>	<p>Saxilby Library St Andrews Centre, William Street, Saxilby, Lincoln, LN1 2LP Tuesday 10:30 - 3:30pm Wednesday 10:30 - 4pm Friday 10:30 - 1pm</p>
<p>Scotter Library High St, Scotter, Gainsborough, DN21 3RY Thursday 2 - 5pm Friday 10 - 1pm, 2 - 5pm</p>	<p>Gainsborough Library Cobden St, Gainsborough, DN21 2NG 9 - 5pm Monday to Friday 9 - 1pm Saturday</p>
<p>West Lindsey District Council Office Guildhall Marshall's Yard, Gainsborough, DN21 2NA Monday - Friday 9 - 5pm</p>	<p>Misterton Library 31 High St, Misterton, Doncaster, DN10 4BU Tuesday 2 - 5pm Thursday 2 - 5pm</p>
<p>St Mary's Church Church Road, Stow, Lincoln, LN1 2DE Monday - Sunday 8:30 - 7pm</p>	

Proposed permissive path at Cottam 1.



Key

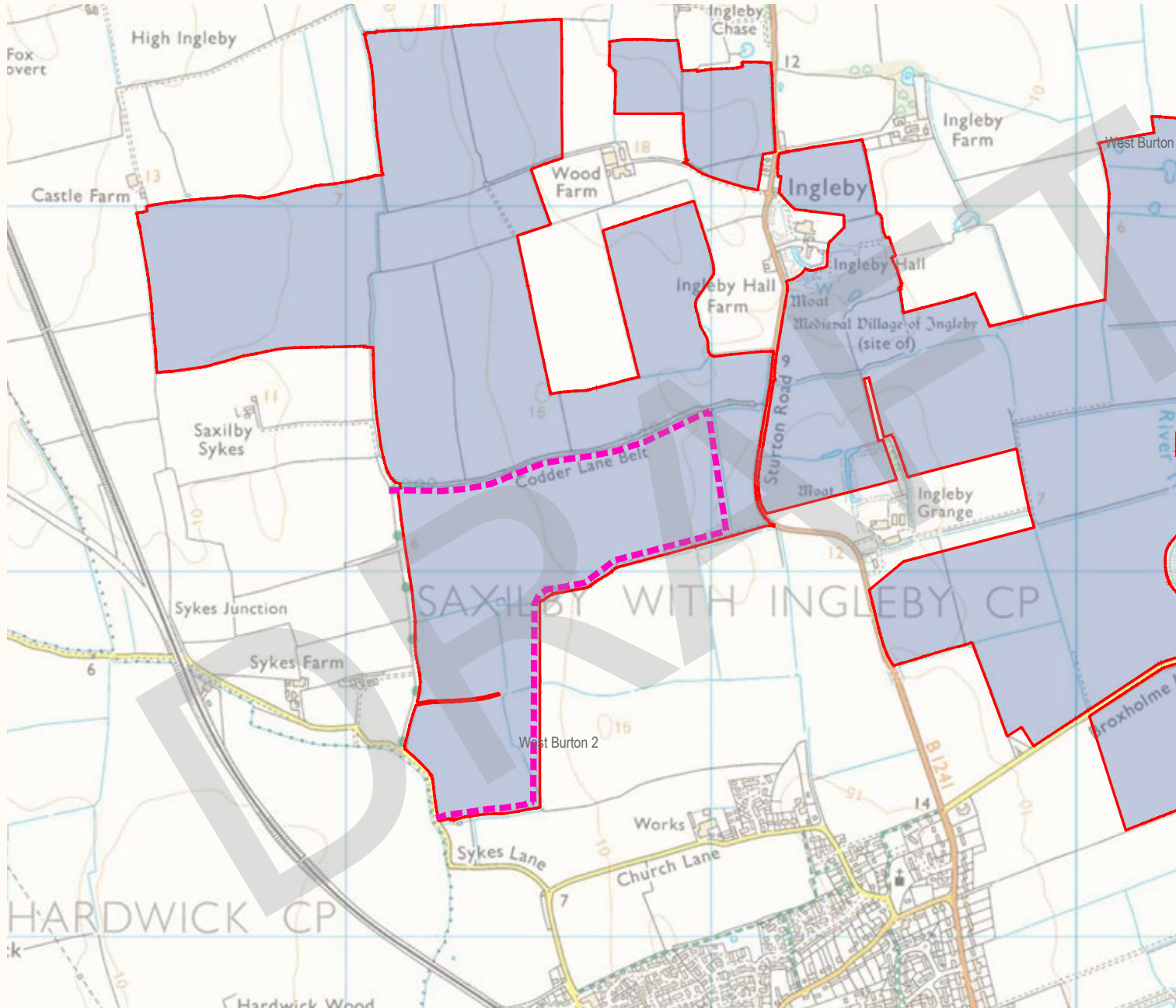


Area for solar panels and associated development





Proposed Permissive Footpath

Proposed permissive path at West Burton 2.



Key

-  Area for solar panels and associated development
-  Proposed Permissive Footpath

Phase Two information events

We are holding a series of information events as part of our phase two consultation. These events offer the opportunity to view and discuss our more detailed plans for both the Cottam and West Burton Solar Projects with members of the project team.

You can either submit your feedback in writing at the events or take a form away to post back to us. We encourage anyone with an interest in either project to come along. We will also be holding webinar events for those unable to attend in-person to ask questions.

Venue	Date and Time
Clayworth Memorial Hall Town St, Clayworth, Retford DN22 9AD	Wednesday 22nd June 2pm - 6pm
Saxilby Village Hall 34 High St, Saxilby, Lincoln LN1 2HA	Thursday 23rd June 3:30pm - 7:30pm
Blyton Memorial Hall Church Ln, Blyton, Gainsborough DN21 3JZ	Friday 24th June 11am - 3pm
Marston and Gate Burton Village Hall Trent Port Rd, Marston, Gainsborough DN21 5AR	Saturday 25th June 12:30am - 4:30pm
Webinar Online (please get in touch to register)	Monday 27th June 5pm - 6:30pm
Willingham Village Hall High St, Willingham by Stow, Gainsborough DN21 5JZ	Friday 1st July 10am - 2pm
Gringley on-the-Hill Community Centre W Wells Ln, Gringley on the Hill, Doncaster DN10 4QY	Saturday 2nd July 11am - 3pm
Webinar Online (please get in touch to register)	Tuesday 12th July 6:30pm - 8pm

What will be available at our events

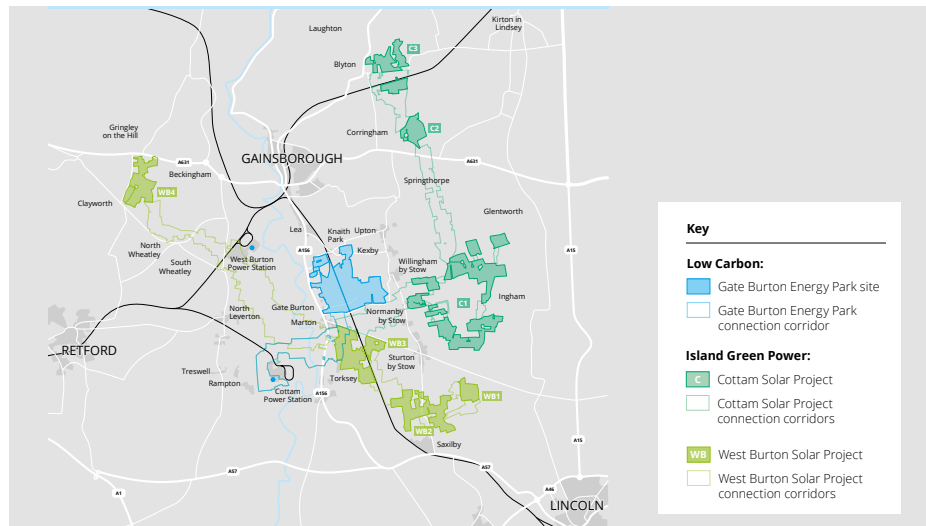
Our information events will give you the opportunity to view all of the consultation materials on the developed and detailed proposals for the Cottam and West Burton Solar Projects. These materials will include:

- Copies of the full PEIR for each project available to view
- Copies of the non-technical summaries of the PEIRs to take away
- Information boards displaying the latest project information
- Site layout plans
- Details of our community benefit proposals and how you can get involved



Other solar consultations

Separate proposals for the Gate Burton Energy Park are being developed by the company Low Carbon. Gate Burton is a separate development, not connected to Island Green Power's Cottam or West Burton projects. However, we are committed to working collaboratively with Low Carbon to make sure that local residents are fully informed about each of the different solar proposals in the area. We are also seeking to combine our cable route installation with Low Carbon, where we can, to ensure as little disruption to the local community as possible.



Low Carbon will also be holding its own consultation on its proposals for Gate Burton Energy Park proposals through June and July. You can find out more about Low Carbon's separate Gate Burton project, including how to respond to their consultation by:

Visiting: www.gateburtonenergypark.co.uk

Calling: 0800 860 6259

Emailing: info@gateburtonenergypark.co.uk

Writing to: FREEPOST GATE BURTON ENERGY PARK

Project timeline

2021 Q4

First phase of community consultation to introduce ourselves and receive feedback on our early stage proposals to help identify and understand any local impacts

2022 Q1

Environmental Impact Assessment (EIA)
Scoping Request submitted to the Planning Inspectorate

2022 Q2

Publication of our Statement of Community Consultation (SoCC) and ongoing development of our EIA

2022 Q2-Q3

Second phase of consultation with community and technical stakeholders, including sharing the findings of our Preliminary Environmental Information Report (PEIR)

2022 Q4

Submission of DCO application to the Planning Inspectorate for public examination

2023

DCO examination and decision

2024

Anticipated start of construction

All future dates are indicative and remain subject change.

Contact us

We want to keep you informed and hear your views on the Cottam and West Burton Solar projects

We have set up dedicated project websites, email addresses and Freephone information lines for both Cottam and West Burton Solar Projects. Our communication lines will remain open throughout phase two and after the consultation period has closed on 27 July. If you have any questions about either project, please don't hesitate to contact the project team using the details below.

Cottam Solar Project



Visit our website: [REDACTED]



Email: [REDACTED]



Call: 0808 1691848



Write to: FREEPOST: CAWB Solar Projects



West Burton Solar Project



Visit our website: [REDACTED]



Email: [REDACTED]



Call: 0808 1691858



Write to: FREEPOST: CAWB Solar Projects



Phase Two Feedback Form



Cottam and West Burton Solar Projects Phase Two Community Consultation Feedback Form

Wednesday 15 June 2022 to Wednesday 27 July 2022.

We want to hear your views on our detailed design proposals for the solar projects including our proposed mitigation measures (how we'll minimise the impact of the projects) and our preliminary environmental information. We also want to hear your views on our community benefit opportunities that we have been working with local groups to develop. We look forward to receiving your feedback and suggestions throughout our consultation.

To inform your responses to this feedback form please review the information presented in our consultation leaflet, on our project websites, or attend one of our information events.

Once completed, this form can be returned to FREEPOST: CAWB Solar Projects

Alternatively, you can provide your feedback online via our project websites or by contacting us through our communication channels. Please see the back page of this form for more details on how to respond and get in touch.

About you

Personal information

You do not have to supply personal details. However, this will help us to understand who has accessed our consultation resources and to enable us to contact you regarding the Cottam and West Burton Solar Projects. Your personal details will be stored in compliance with the Global Data Protection Regulation (GDPR) by Counter Context acting on behalf of Island Green Power and will not be shared with third parties.

Name:

Organisation (if applicable):

Address:

Postcode: Telephone:

E-mail address:

More about you

Q1: How would you describe your interest?

Local resident

Local representative

Landowner

Local business owner

Regular visitor

Local interest group member
(if so, please name)

Statutory organisation

Other
(please specify):

The proposals for the Cottam Solar Project and West Burton Solar Project are being brought forward at the same time, and the projects are located close together. We recognise you may be interested in both projects. Please let us know if you would like your feedback to be considered for both projects or for one project specifically.

Q2: Are you providing your feedback on only one of the solar projects, or both?

I am providing feedback on Cottam Solar Project only:

I am providing feedback on West Burton Solar Project only:

I am providing feedback on both Cottam and West Burton Solar Projects together:

Our Proposals

Q3.a: Based on the new information presented as part of our phase two consultation, how supportive are you of our emerging solar project proposals, which would generate clean, affordable, and reliable renewable energy for the national grid, with energy storage for when it is needed most?

I strongly support the solar project proposals

I support the solar project proposals

I am neither support nor unsupportive

I do not support the solar project proposals

I strongly oppose the solar project proposals

Q3.b: Please explain why you think this.

During our phase one consultation in 2021 we invited comments on the issues that were most important to you. Your feedback was essential for us to develop our site layouts and refined cable routes and to inform our preliminary assessments of potential environmental impacts.

We now want to hear your views on our detailed proposals for the projects including our preliminary environmental information and proposed mitigation measures. We really value your feedback. This will help shape those areas where there is still scope for you to influence the projects.

Updated information on the design of the site layouts and refined cable routes is available to help inform your responses to our consultation questions. Following this phase of consultation, we will review all feedback received to inform our final site design, cable routes and planned mitigation measures as part of our full Environmental Impact Assessment (EIA).

Q4.a: What environmental issues relating to the proposals are most important to you? Please tick the relevant boxes.

Traffic, access and construction

Air Quality

Noise and light pollution

Water and flood risk

Local heritage

Landscape and views

Local ecology and biodiversity

Energy needs and climate change

Land quality and use

Other (please detail)

Q4.b: Why do you think these things are most important?

Q5.a: We have shared with you our detailed designs for the site layout at all of the 8 sites we have proposed, do you have specific comments on our design for any of the sites?

Cottam 1

Cottam 2

Cottam 3

West Burton 1

West Burton 2

West Burton 3

West Burton 4

West Burton substation

Q5.b: Please provide your specific comments on the site design for these areas.

Q6.a: Since phase one we have worked to refine our cable route corridors (areas within which the exact routes of the cables could go). We have now presented you with our refined proposals for more specific cable routes for each project. Do you have any specific comments on our cable routes for either of the projects?

Cottam 1	Cottam 2	Cottam 3	West Burton 1
<input type="radio"/>	<input type="radio"/>	<input type="radio"/>	<input type="radio"/>
West Burton 2	West Burton 3	West Burton 4	
<input type="radio"/>	<input type="radio"/>	<input type="radio"/>	

Q6.b: Please provide your specific comments on the refined cable routes.

Q7: We have presented proposals in the PEIR for mitigating impacts on the local ecology and delivering biodiversity net gain. Do you have any comments on these proposals or do you have anything else you would like us to consider?

Q8: In the PEIR we have shown photographs looking towards the sites taken from publicly accessible viewpoints. Please share with us suggestions you have on your preferred landscaping measures, including for example the positioning of the infrastructure and location of tree planting. Please indicate which site your comments refer to.

Cottam 1



Cottam 2



Cottam 3



West Burton 1



West Burton 2



West Burton 3



West Burton 4



Large grey rectangular area for providing landscaping suggestions for Q8.

Q9: Do you have any comments on our traffic access routes and the proposed mitigation measures in the PEIR being considered when preparing for the construction phase of the projects?

Large grey rectangular area for providing comments on traffic access routes and mitigation measures for Q9.

Community Benefits

Q10.a: We present updated community benefit proposals for Permissive Paths around Cottam 1. Do you think these provide suitable benefits for the local community?

Yes

No

Unsure

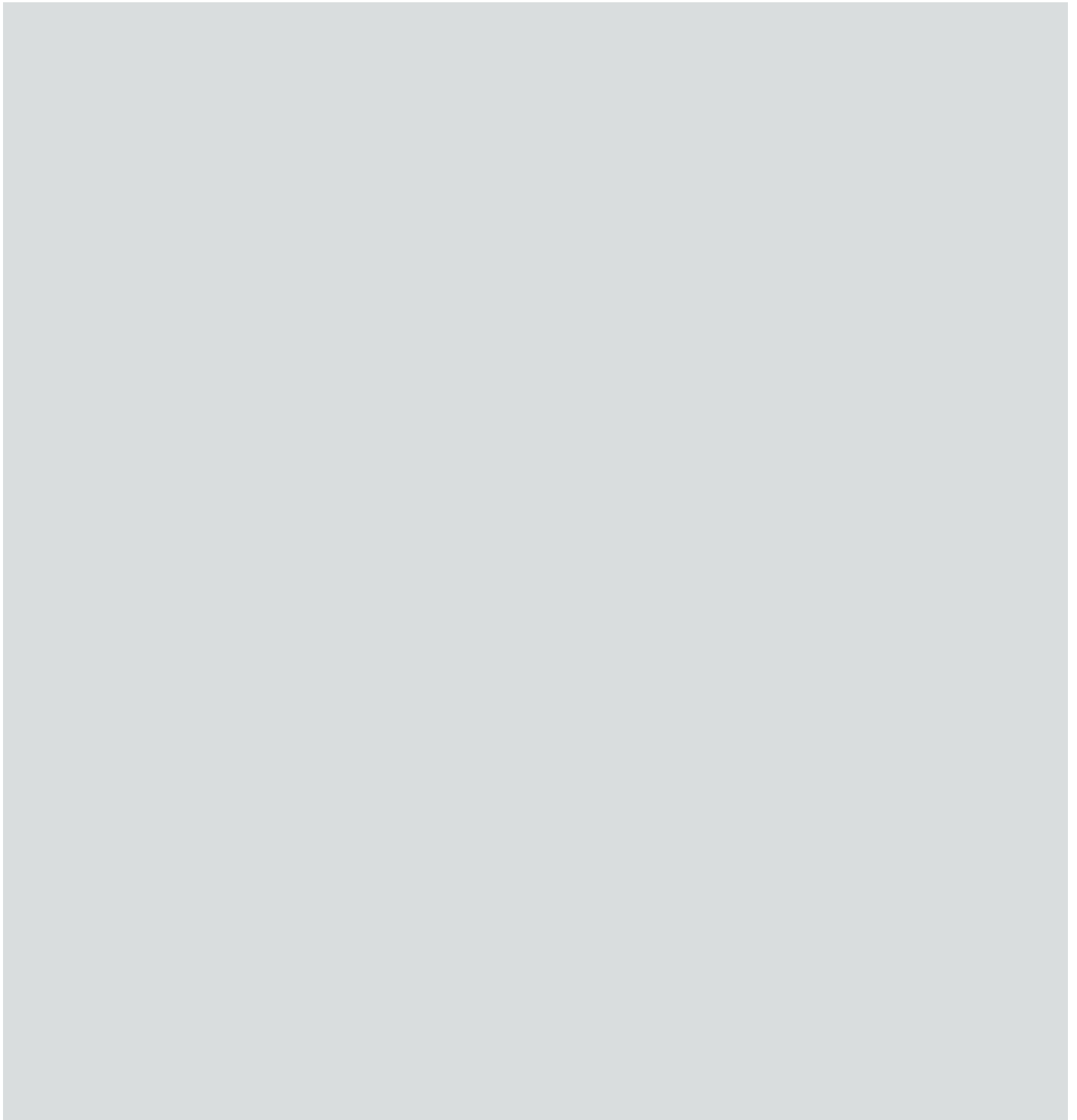
Q10.b: We present updated community benefit proposals for Permissive Paths around West Burton 2. Do you think these provide suitable benefits for the local community?

Yes

No

Unsure

Q10.c: Do you have any other comments on our proposed community benefit opportunities or any suggestions you would like us to consider further?



Our Consultation

Q11: Have you attended one of our information events?

Yes

No

Q12: How informative did you find our consultation materials?

Very informative

Quite informative

Not informative

No opinion

Q13: Do you have any further comments on our phase two consultation for the Cottam and West Burton Solar Projects?

Get in touch

To return your completed feedback form, put this feedback form in an envelope and address it to FREEPOST: CAWB Solar Projects. You will not need a stamp.

Alternatively, you can answer the same questions on our digital engagement platform via: [REDACTED]

Our dedicated project websites, email addresses and Freephone information lines for both Cottam and West Burton Solar Projects are also all available. If you have any questions about either project, please don't hesitate to contact the project team using the details below.

Cottam Solar Project



Email:

[REDACTED]



Freephone information line:
0808 1691848



Visit our website:

[REDACTED]



West Burton Solar Project



Email:

[REDACTED]



Freephone information line:
0808 1691858



Visit our website:

[REDACTED]

